

Leroy Somer P 225 M-4

Specifications

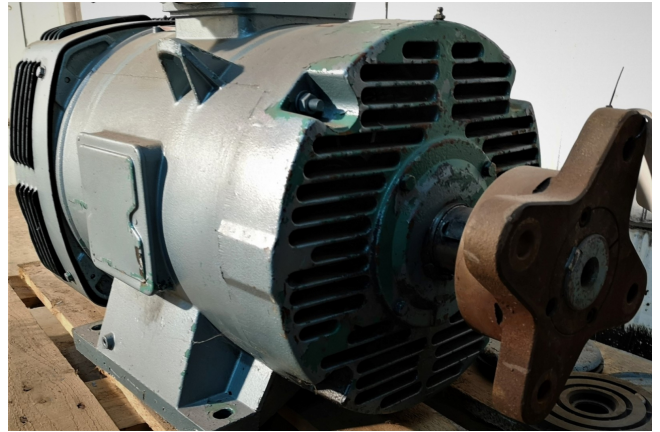
Marke	Leroy Somer
Art	P 225 M-4
kW	55
RPM	1460
Size & Weight	820x110x540 mm (LxWxH)
50 Hz / 60 Hz	50 Hz
Stock	1



Description

Used Leroy Somer P 225 M-4

Gebrauchter Leroy Somer P 225 M-4 Elektromotor mit 50 kW und 1445 U/min bei 50 Hz. Größen: 630x280x420 mm (LxBxH). Gewicht: 135 kg.



MOT ASYN		02/1990	
Typ	P 225 II-4	IP	23 50 Hz 3 ~
Kw	55	V	Δ380
RPM	1460	A	109
S	S1	Id/in	5.1
CL	F M 240 kg	Cd/Cn	2.3
°C	40 Alt	m	Cos φ .84
J net	kg/m ²	dBA	η 91.5
CA DE	6314 C3	ESSO	3800
COA	6214 C3	UNIREX N°3	30
box. lag Roulements		GRAISSE/GREASE	
PRESTIBLOC		NFC 51111.79	
16015 Angoulême FRANCE		CEI 34.1	
MOTEURS LEROY - SOMER		PM 0670	